



11 Anslow Avenue, Beeston, Nottingham, NG9 2SW

£1,350 PCM

- 2 Bathrooms
- 3 Bedrooms
- Medium Sized Garden
- Children Welcome
- Mid Terraced House
- 1 Receptions
- Permit Parking Available
- Sorry, No Smokers
- Part Furnished
- Beeston

# 11 Anslow Avenue, Nottingham NG9 2SW

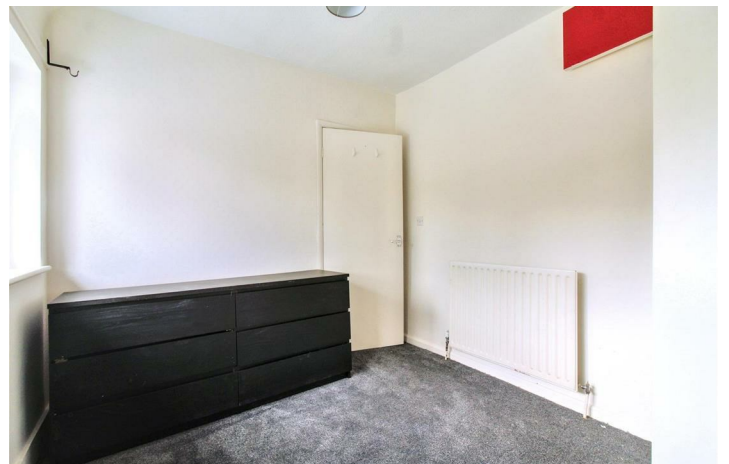
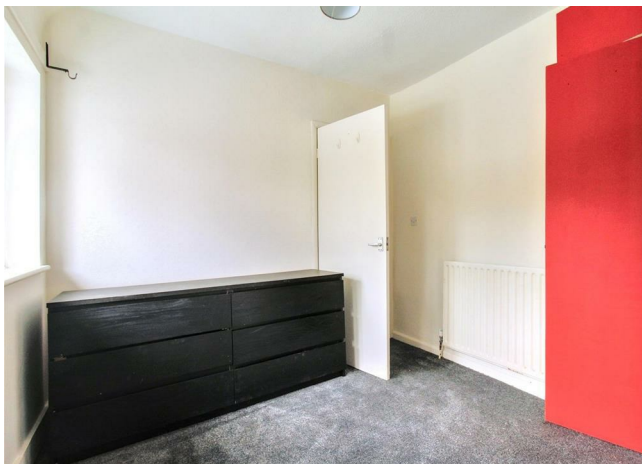
\*\*\* PART FURNISHED\*\*\*

Robert Ellis are delighted to offer to the market this 2/3 bedroom property, located off the main road close to the A52 and local transport links. Offered part furnished the property briefly comprises; Entrance hallway, leading to a living room/downstairs bedroom, open plan large kitchen/diner with access to the back garden, downstairs w/c and shower room. To the first floor is two good sized bedrooms and a bathroom with a walk in shower. The property benefits from a large front and an enclosed back garden. Must be viewed to fully appreciate.

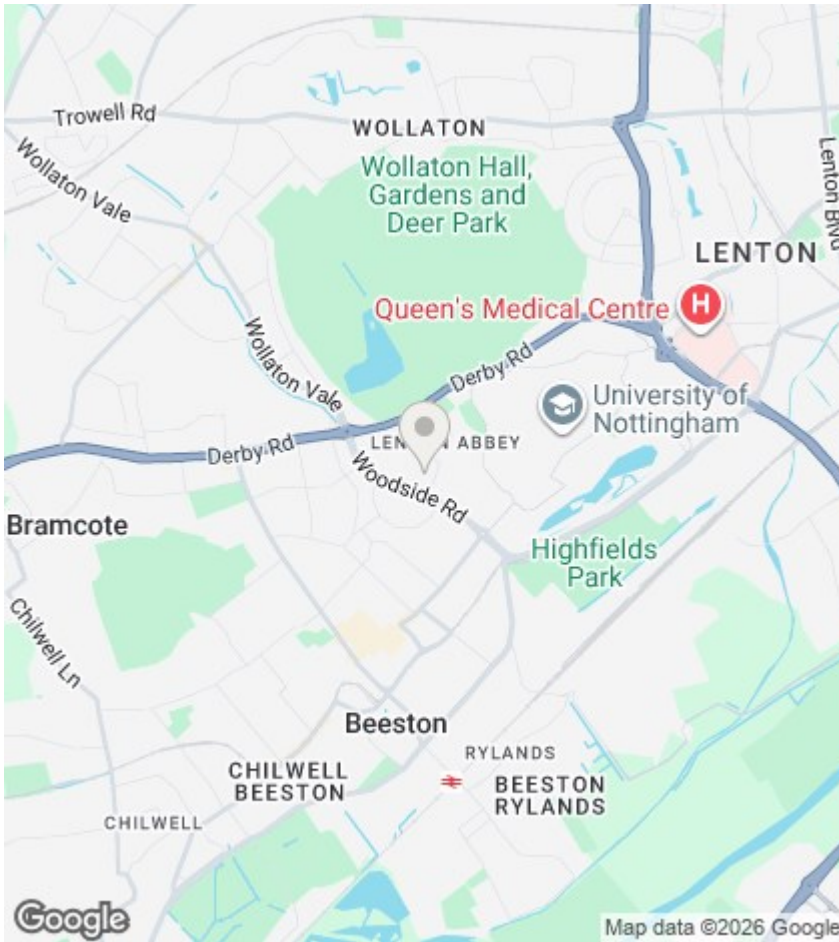
Available mid June - Accompanied Viewings - Beeston Office



Council Tax Band:







## Directions

## Viewings

Viewings by arrangement only. Call 0115 9229090 to make an appointment.

**EPC Rating:**  
C

Energy Efficiency Rating		Current	Potential
Very energy efficient - lower running costs			
(92 plus) <b>A</b>			
(81-91) <b>B</b>			87
(69-80) <b>C</b>		73	
(55-68) <b>D</b>			
(39-54) <b>E</b>			
(21-38) <b>F</b>			
(1-20) <b>G</b>			
Not energy efficient - higher running costs			
<b>England &amp; Wales</b>		EU Directive 2002/91/EC	